



Public Works Manual

Revised September 2015



Appendix D: Storm Sewer

Appendix D
Typical Storm Sewer Details

D.1 – 4' Scupper Detail

D.2 – 6' Scupper Detail

D.3 – 8' Scupper Detail

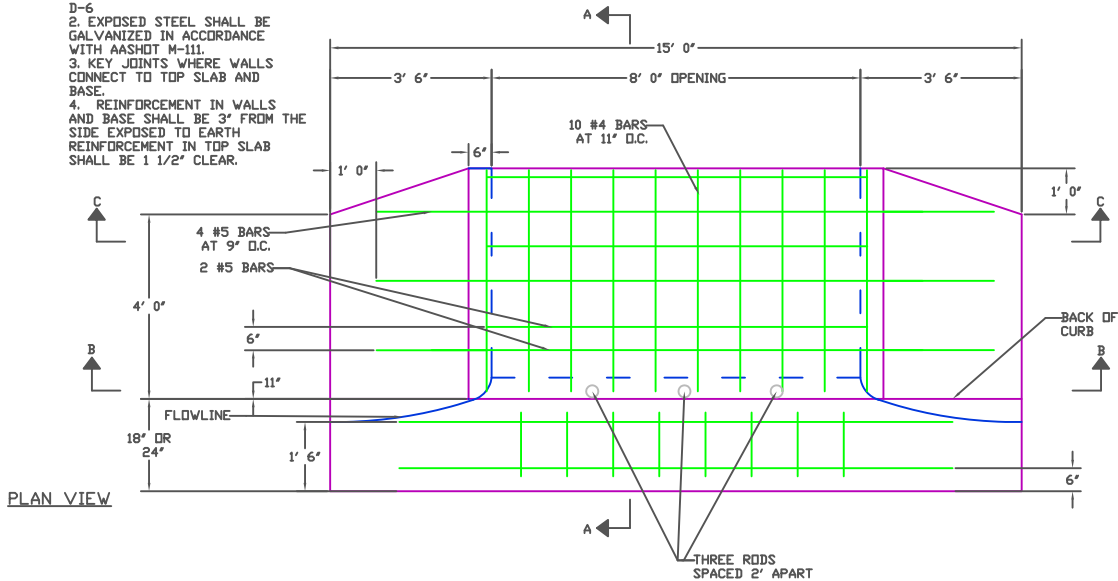
D.4 – Storm Sewer Trench Detail

D.5 – Valley Pan Detail

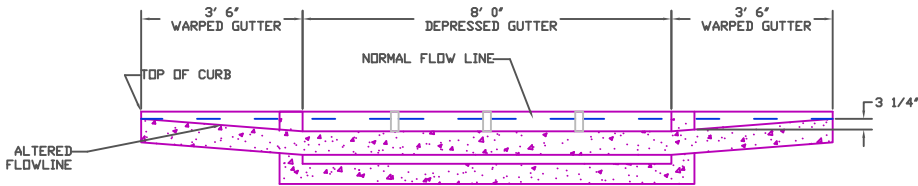
D.6 – Curb Inlet

GENERAL NOTES

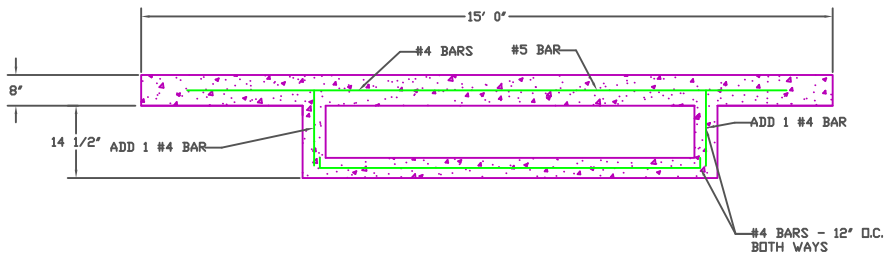
1. TOP OF SLAB OF CULVERT SHALL BE SLOPED TO MATCH SIDEWALK. SEE D-6
2. EXPOSED STEEL SHALL BE GALVANIZED IN ACCORDANCE WITH AASHTO M-311.
3. KEY JOINTS WHERE WALLS CONNECT TO TOP SLAB AND BASE.
4. REINFORCEMENT IN WALLS AND BASE SHALL BE 3" FROM THE SIDE EXPOSED TO EARTH. REINFORCEMENT IN TOP SLAB SHALL BE 1 1/2" CLEAR.



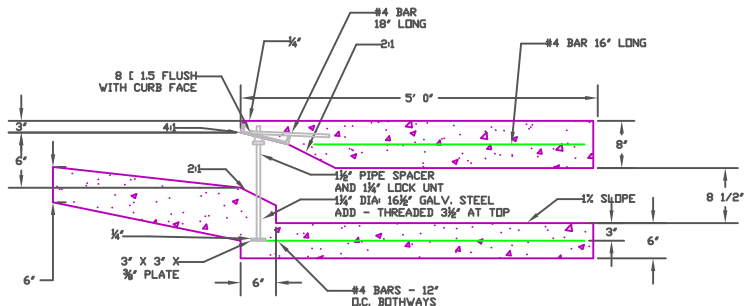
PLAN VIEW



SECTION B-B



SECTION C-C



SECTION A-A



8' SCUPPER DETAIL		Date:	Jan 2009
		Location:	\\.\Storm\Scupper

NO.	DWN.	DATE.	REVISION

