

- PLANTING NOTES:**
1. Any discrepancies with the drawings and site conditions shall be brought to the Attention of the owners representative prior to proceeding with construction.
 2. Contractor to verify all field conditions, easement, property lines, etc. prior to starting work. Should any discrepancies, omissions or errors occur, notify the owner's representative immediately.
 3. Contractor is responsible for locating all utilities 48 hours prior to any excavation or planting.
 4. Landscape contractor shall be responsible for any coordination with subcontractors as required to accomplish planting operations.
 5. Plant material locations shall be coordinated with sprinkler irrigation head locations to avoid conflicts.
 6. All plant material shall be in accordance with American Association of Nurseries (AAN) specifications for number one grade.
 7. All trees to be balled and burlapped unless specified otherwise on the Plant List.
 8. Edging between lawn areas and shrub or perennial beds to be 1/8" x 4" galvanized steel set level with top of lawn if required.
 9. All shrub, ground cover, perennial beds shall receive a minimum of 3" wood shavings mulch over Typar filter fabric unless noted otherwise on the plans.
 10. Gravel mulch shall be 1 1/2" to 2" crushed, washed rock over Typar filter fabric.
 11. All mulches & compost to be approved by owner's representative prior to installation.
 12. All tree and shrub mass locations shall be staked and approved by the owner's representative prior to planting.
 13. The owner shall maintain landscaped areas within the adjacent right-of-ways. Maintenance shall include but not be limited to irrigation, mowing, pruning, removal of trash and weeds and replacement of any plantings that become diseased, infested or otherwise unhealthy.

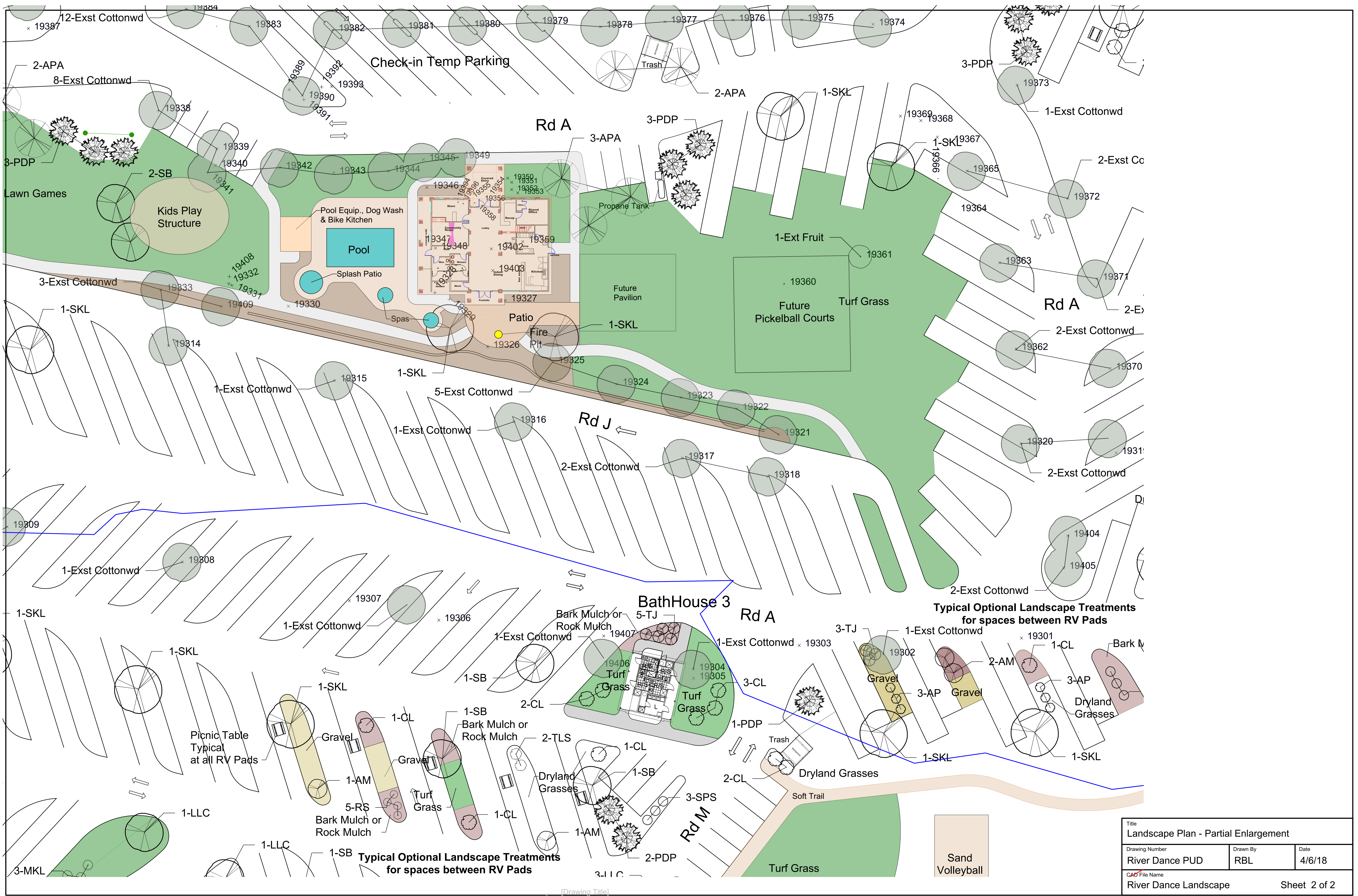
- IRRIGATION NOTES:**
1. Irrigation shall be permanent underground automatic irrigation system. All shrub beds and trees to be irrigated an automatic drip irrigation system. Requirements to be Coordinated with owner's representative.
 2. The irrigation system should be adjusted to a low water requirement based on the needs of selected plant material.
 3. Irrigation tap(s) to be provided by general contractor. Irrigation contractor shall verify P.S.I. and gpm available. System shall be designed to meet the available P.S.I. and gpm.
 4. Quick couplers shall be provided at each point of connection. Refer to civil drawings included with this drawing set for point of connection location. Locate quick coupling valve at a point of easy access.
 5. Quick couplers shall be provided at regular spacing along the irrigation main line. Spacing of quick couplers shall not exceed 200 feet.
 6. final location of irrigation heads must be approved by owner's representative prior to planting. Head location shall be coordinated in the field with existing site conditions and plant material.
 7. Coordinate all work with existing utilities and respective trades.
 8. All irrigation sleeving shall be provided and installed by general contractor. Irrigation contractor shall coordinate sleeving locations with general contractor. All irrigation sleeving to be staked in the field or located on a dimensioned "As Built" drawing by the general contractor.

ID	Qty	Botanical Name	Common Name	Scheduled Size	Remarks
AM	7	Acer ginnala	Amur Maple	1.5" cal	
AP	6	Fallugia paradoxa	Apache Plume	5 gal	
APA	8	Fraxinus americana 'Autumn Purple'	Autumn Purple Ash	1.5" cal	
BP	3	Juniperus x media/Pfitzerana Compacta/chinensis	Compact Pfitzer Juniper	5 gal	
CL	23	Syringa vulgaris	Common Lilac	5 gal	
Ext Co	59	Existing Cottonwood	Existing Cottonwood		
Ext Fruit	1	Ext Fruit	Ext Fruit Tree		
LLC	74	Populus x acuminata	Lanceleaf Cottonwood	1.5" cal	
MKL	9	Syringa patula 'Miss Kim'	Miss Kim Lilac	5 gal	
PDP	30	Pinus ponderosa	Ponderosa Pine	6'	
RS	5	Perovskia atriplicifolia	Russian Sage	5 gal	
RTD	19	Cornus sericea 'Bailey'	Red Twig Dogwood	5 gal	
SB	39	Acer negundo 'Sensation'	Sensation Boxelder	1.5" cal	
SKL	54	Gleditsia triacanthos inermis 'Skyline'	Skyline Honeylocust	1.5" cal	
SPS	23	Caragana arborescens	Siberian Peashrub	5 gal	
TJ	8	Juniperus sabinia tamariscifolia	Tam Juniper	5 gal	
TLS	2	Rhus aromatica trilobata	Three Leaf Sumac	5 gal	



Plan prepared by:
Land Design Partnership
 Ronald Liston
 Colorado LA License #792
 918 Cooper Avenue
 Glenwood Springs, CO 81601
 970-945-2246

Title LANDSCAPE PLAN		
Drawing Number Rive Dance PUD	Drawn By RBL	Date 4/6/18
CAD File Name River Dance Landscape		Sheet 1 of 1



Check-in Temp Parking

Rd A

Rd A

Rd J

BathHouse 3

Rd A

Typical Optional Landscape Treatments for spaces between RV Pads

Typical Optional Landscape Treatments for spaces between RV Pads

Title Landscape Plan - Partial Enlargement		
Drawing Number River Dance PUD	Drawn By RBL	Date 4/6/18
CAD File Name River Dance Landscape		Sheet 2 of 2

Scale: 1" = 20 ft