

Civil Engineering
Surveying
& Engineering
PRELIM
P.O. BOX 100
JANUARY 2011
CITY OF STENOVA
2010 REVISED
STENOVA, ILLINOIS 62451
PHONE: 618-537-2333
FAX: 618-537-2334
www.stenovalibrary.org

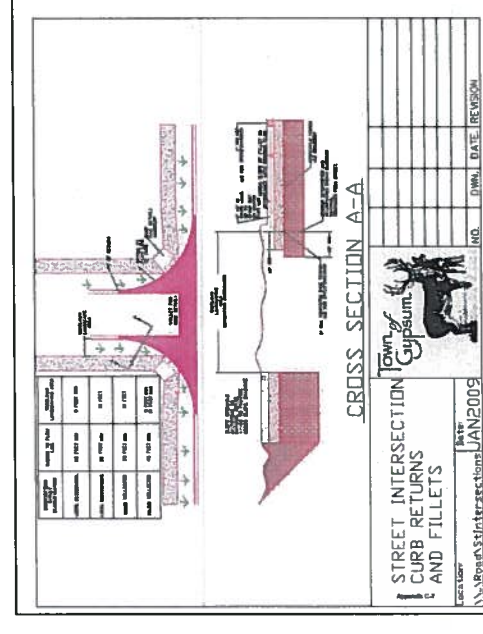
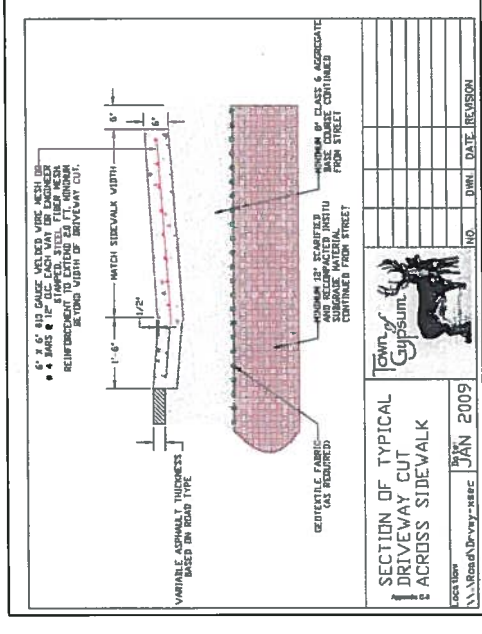
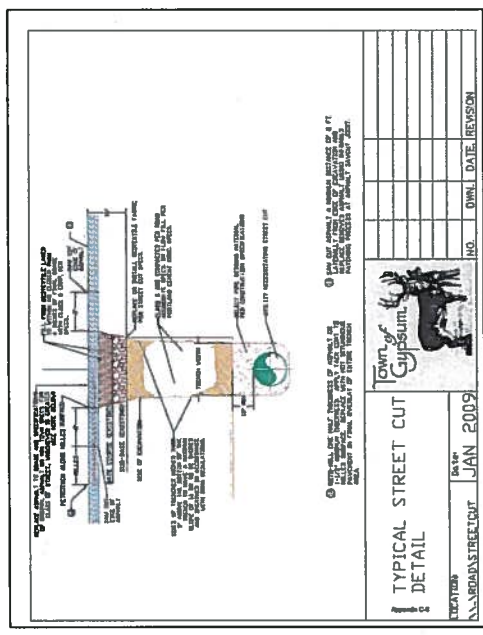
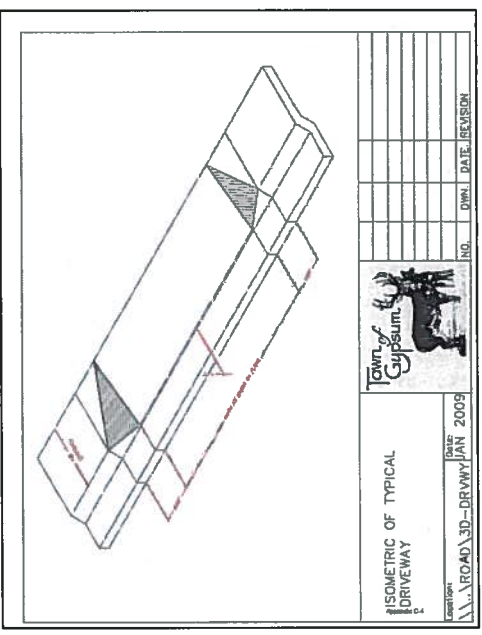
PRELIM
PROFESSIONAL
ENGINEER
STATE OF ILLINOIS
NO. 062-0000000-000
EXPIRES 09/30/2011

181
COMMUNITY CENTER BUILDING
EAST STENOVA, ILLINOIS

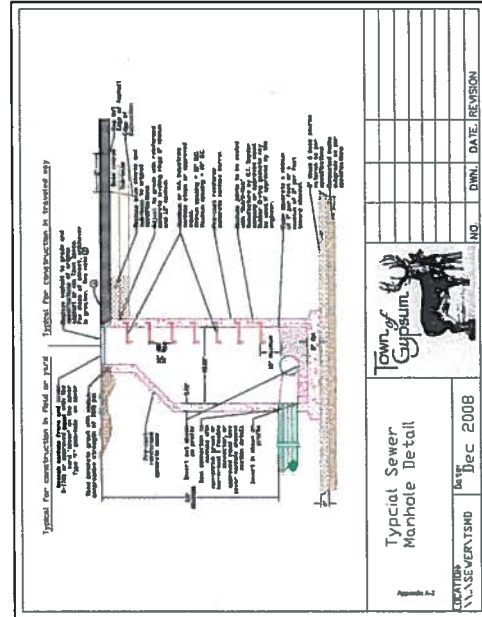
STENOVA, ILLINOIS
StenoVA Lake PUD
Road Detail Sheet
Preliminary Plan

NO.	DATE	REVISION
1	01/09/2009	ISSUED FOR PERMIT
2	01/09/2009	REVISED PER COMMENTS
3	01/09/2009	REVISED PER COMMENTS
4	01/09/2009	REVISED PER COMMENTS
5	01/09/2009	REVISED PER COMMENTS
6	01/09/2009	REVISED PER COMMENTS
7	01/09/2009	REVISED PER COMMENTS
8	01/09/2009	REVISED PER COMMENTS
9	01/09/2009	REVISED PER COMMENTS
10	01/09/2009	REVISED PER COMMENTS

DT-RD2
Scale: 1"=10'-0"
DATE: 01/09/2009
DRAWN BY: [blank]
CHECKED BY: [blank]



1/9/2009 11:23:42 AM \\S:\Roads\Streets\JAN 2009\DT-RD2.dwg



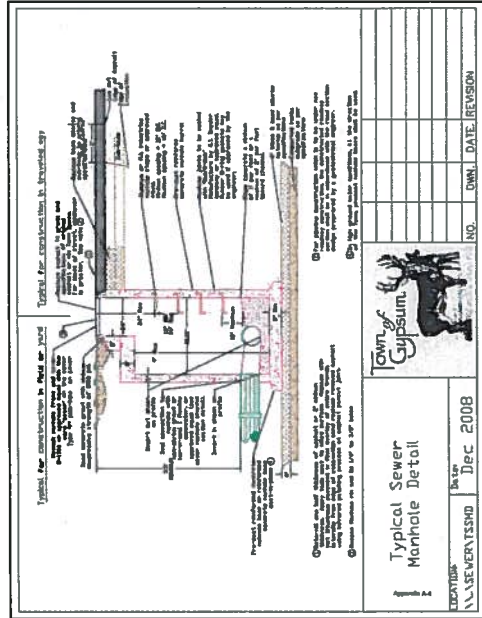
Appendix A-2
Typical Sewer Manhole Detail
Date: Dec 2008
Location: SEWER TRENCH

NO. DATE REVISION



Appendix A-1
SEWER STORM SEWER AND WATER TRENCH DETAIL
Date: Dec 2008
Location: SEWER SERVICE

NO. DATE REVISION



Appendix A-2
Typical Sewer Manhole Detail
Date: Dec 2008
Location: SEWER SERVICE

NO. DATE REVISION



Appendix A-2
Sewer Service
Date: Dec 2008
Location: SEWER SERVICE

NO. DATE REVISION

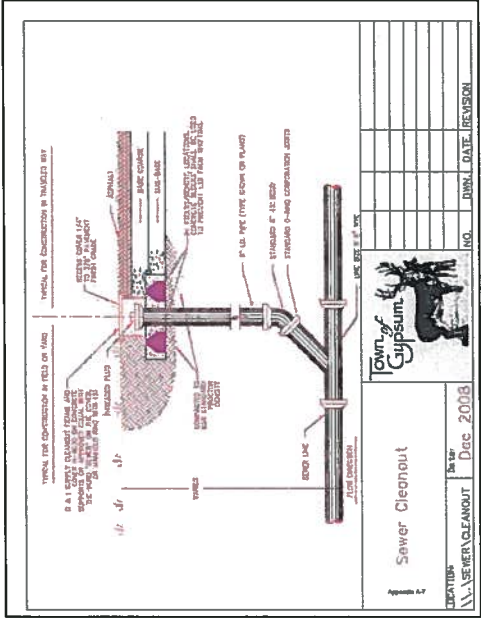
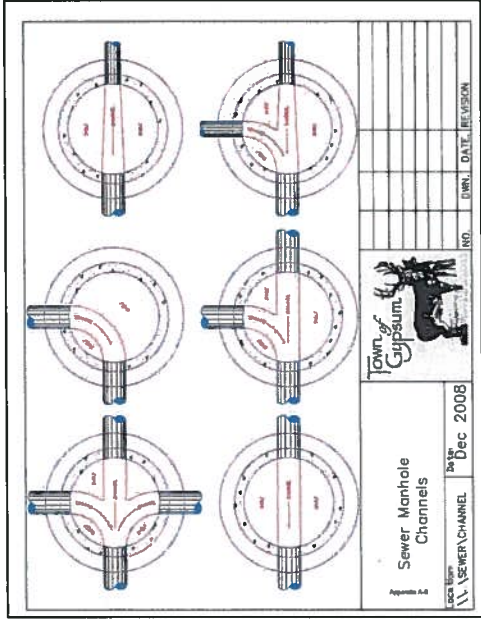
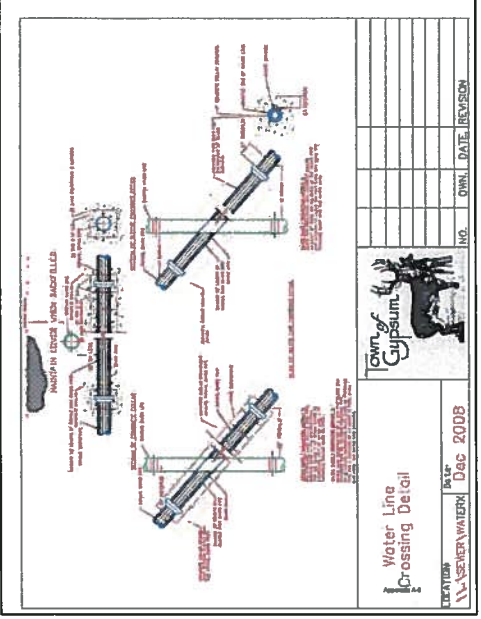
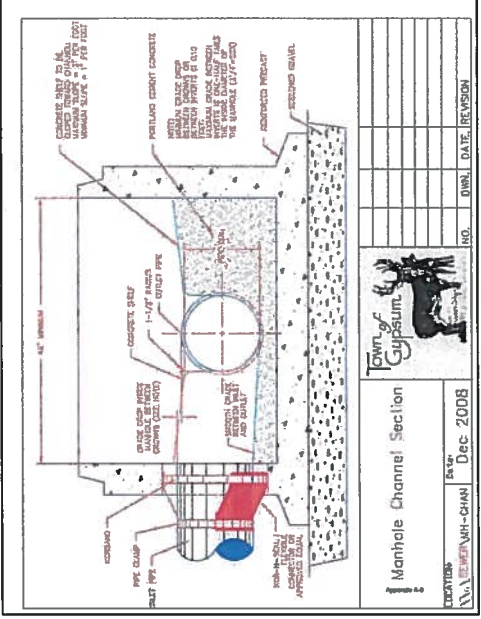
DATE: 11/21/11
DRAWN: WWA
CHECKED: WWA
DATE: 11/21/11
DRAWN: WWA
CHECKED: WWA

**Siena Lake PUD
Sanitary Sewer Detail Sheet
Preliminary Plan**

PRELIMINARY



18
Call before you dig.
www.811.org



City of Chicago
Department of Public Works
Engineering & Inspection
Division

PRELIMINARY
NO. 18

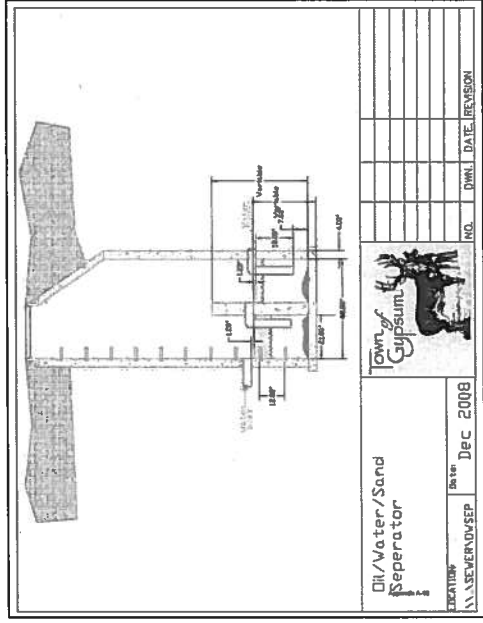
NO. 18
NO. 18
NO. 18

NORTH

18
18
18

Sienna Lake PUD
Sanitary Sewer Detail Sheet
Preliminary Plan

NO.	DATE	REVISION
1		
2		
3		
4		
5		
6		
7		
8		
9		
10		

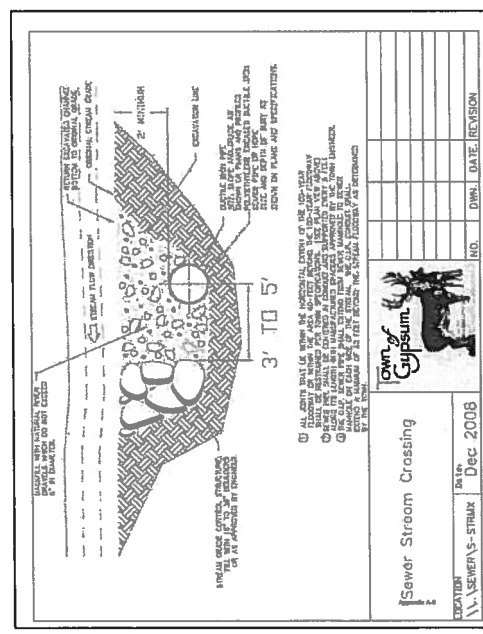


Oil/Water/Sand Separator

LOCATION: W. SEWER/NDSEP

DATE: Dec 2008

NO. DATE REVISION



Sewer Stream Crossing

LOCATION: W. SEWER/AS-STRAIR

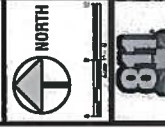
DATE: Dec 2008

NO. DATE REVISION

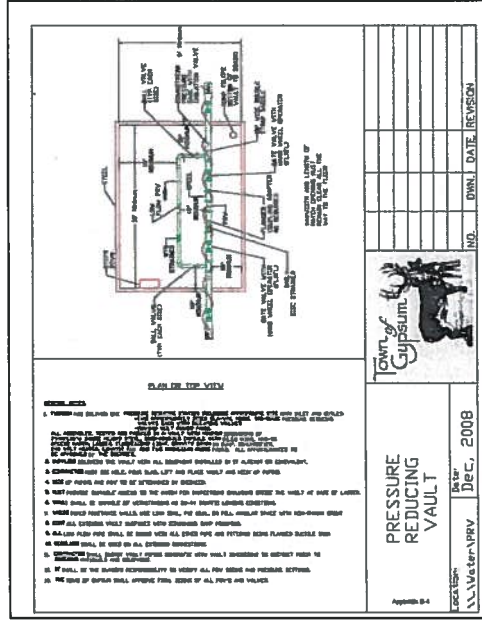
1-104-10
NO. DATE REVISION

NO.	DATE	REVISION

Stena Lake PUD
Preliminary Plan
Peeble Water Detail Sheet



CVL Engineering
1500 S. W. 10th Ave.
Suite 201
Denver, CO 80202
Tel: 303.733.2233
Fax: 303.733.2233



NO.	DATE	REVISION

Dec 2008

CVL Engineering

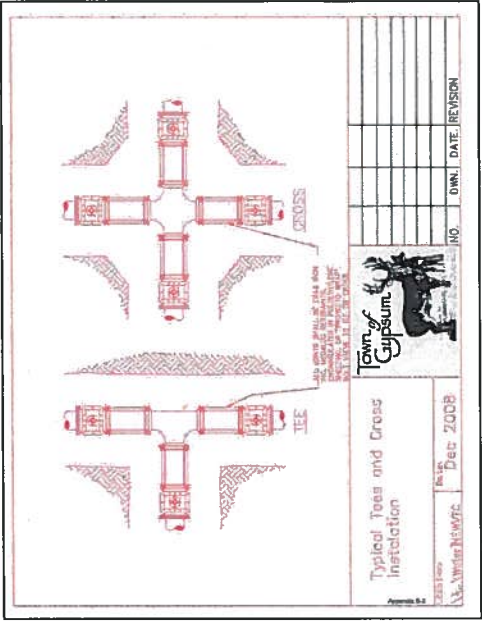
PRELIM

12853

State of Colorado

CVL Engineering

1500 S. W. 10th Ave.
Suite 201
Denver, CO 80202
Tel: 303.733.2233
Fax: 303.733.2233



NO.	DATE	REVISION

Dec 2008

CVL Engineering

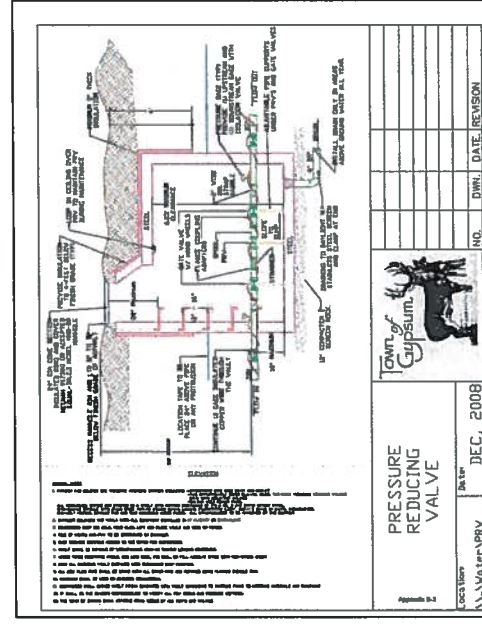
PRELIM

12853

State of Colorado

CVL Engineering

1500 S. W. 10th Ave.
Suite 201
Denver, CO 80202
Tel: 303.733.2233
Fax: 303.733.2233



NO.	DATE	REVISION

Dec 2008

CVL Engineering

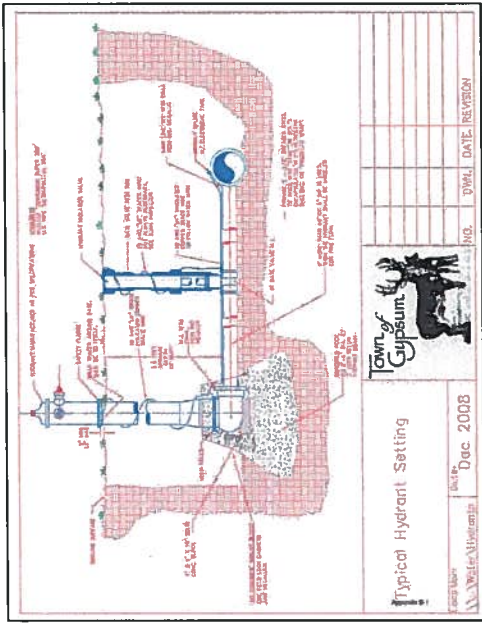
PRELIM

12853

State of Colorado

CVL Engineering

1500 S. W. 10th Ave.
Suite 201
Denver, CO 80202
Tel: 303.733.2233
Fax: 303.733.2233



NO.	DATE	REVISION

Dec 2008

CVL Engineering

PRELIM

12853

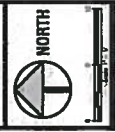
State of Colorado

CVL Engineering

1500 S. W. 10th Ave.
Suite 201
Denver, CO 80202
Tel: 303.733.2233
Fax: 303.733.2233



15555 S. W. 11th Street
 Suite 201
 Miami, FL 33186
 Phone: 772.254.0323
 Fax: 772.254.0323



181
 Engineers & Architects
 South Broward County

Siena Lake PUD
 Polbale Water Detail Sheet
 Preliminary Plan

NO.	DATE	REVISION

