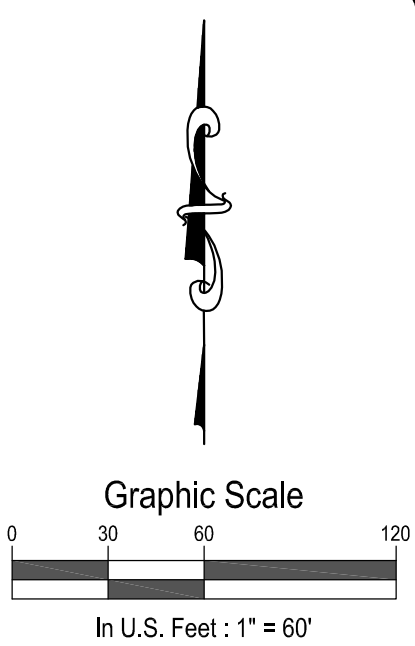


Final Plat
Rocky Mountain Commerce Park
 A Resubdivision of Parcel A and Parcel B of the
 Final Plat of Spring Creek Park
 Tract 60, Township 5 South, Range 85 West of the 6th P.M.
 Town of Gypsum, Eagle County, Colorado



SGM
 118 West Sixth Street, Suite 200
 Glenwood Springs, CO 81601
 970.945.1004 www.sgm-inc.com

Rocky Mountain Commerce Park
 Town of Gypsum, Eagle County, Colorado

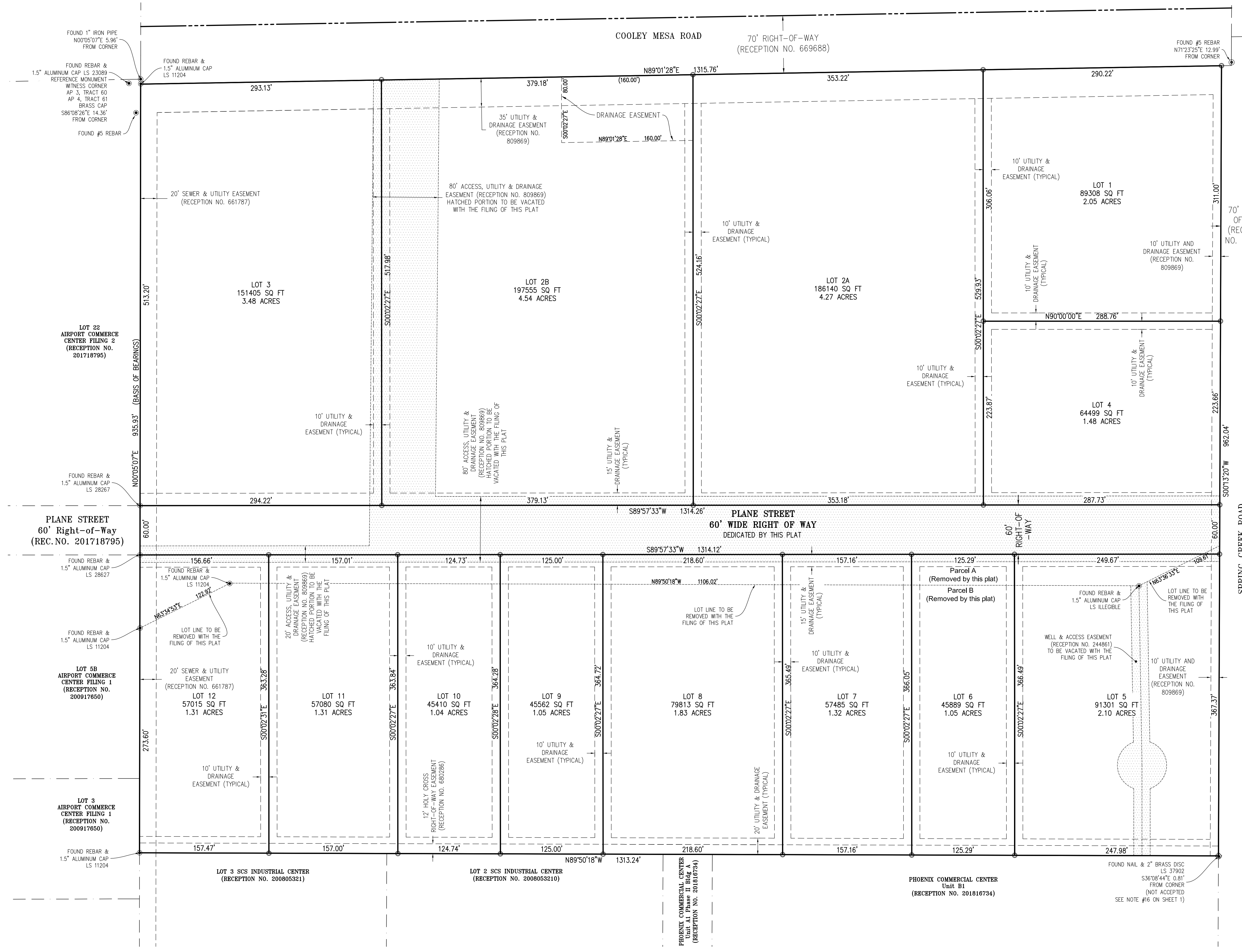
Date	By	Revision

Job No. 2020-462.001
 Drawn by: MEW
 Date: 2/18/21
 Approved: TAB
 File: RockyMtnCommParkSubPlat

Title: **FINAL SUBDIVISION PLAT**

Sheet No. **2**
 Of: 2

DRAFT COPY ONLY



- LEGEND -**
- Found Monument as Described
 - 18" Long #5 Rebar with 2" Aluminum Cap Stamped LS 38404 to be set upon approval
 - ◇ 1" Brass Pin stamped LS 38404 to be set upon approval
 - ▨ Easement to be vacated

I:\gms\1\Projects\2020-462-SpringCreekPark\Drawings\RockyMtnCommParkSubPlat.dwg Plot Date: 2/18/2021 11:28 AM By: Mary Winkley