

How to Recycle in Eagle County

STEP 1: RECYCLE WHAT YOU CAN

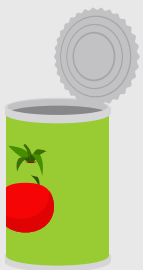
Always Recycle These Items



Glass Jars & Bottles
without lids



Bottles, Tubs, Jugs
with lids attached



Tin Cans



Aluminum Cans
plz don't crush & remove stickers or wrappings



Cardboard
Single-Stream or Drop-site



Magazines & Junk Mail



Paperboard
no frozen food boxes



Newspaper, Paper,
Office/Mixed Paper

Sort Your Recycling

1 BIN (SINGLE-STREAM)



Put all recyclables into the same bin.

Note that most businesses use single-stream.

Single-Stream:

- > VAIL VALLEY WASTE
 - > WASTE MANAGEMENT
 - > VAIL HONEYWAGON
- all other residential pick up aside from the dual stream communities on the right.

2 BINS (DUAL-STREAM)



Bin 1

Plastics, glass, cans & bottles

Bin 2

Paper & paperboard

Bring to drop-site

Cardboard (not collected curbside)

Dual-Stream:

> FREE RECYCLING DROP-SITES

> VAIL HONEYWAGON
in the communities of:
TOWN OF EAGLE
TOWN OF MINTURN

Dual-Stream Recycling Only

- Plastic Cups
- Clam Shell Containers *fruits & veggies*
- Shredded Paper

FREE RECYCLING DROP-SITES

Vail | 75 S. Frontage Road & Textiles and Compost!

Red Cliff | 400 Pine St.

Avon | 375 Yoder Ave. & Textiles and Compost!

Edwards | West End of Mountain Recreation Field House

Eagle | 1050 Chambers Ave. & Textiles and Compost!

Gypsum | Ridley's Market

Reach out to Honeywagon Organics for information about the compost drop-site program



Eagle County Waste Wizard is a Free Recycling App

Available in English and Spanish



STEP 2: DIVERT OTHER ITEMS

These items never ever go in home or business recycling, however...



Special Collection Locations Exist For These Items

- Batteries
- CFL Light Bulbs
- Electronic Waste
- Food, Yard Waste & Greasy Pizza Boxes *compost!*
- Scrap Metal
- Plastic Bags *includes grocery and trash bags*
- Aerosol Spray Cans
- Syringes & Needles
- Textiles *clothing, sheets, fabrics, shoes*

WHERE TO DIVERT?

Check the Waste Wizard App for these opportunities

Household Hazardous & Electronic Waste Facility

Fabric & Textile Drop-Sites

Trinity Recycling (Scrap Metal & Appliances)

Hard To Recycle Events

Compost Drop-Sites

STEP 3: TRASH THESE ITEMS

NEW TRASH ITEMS!

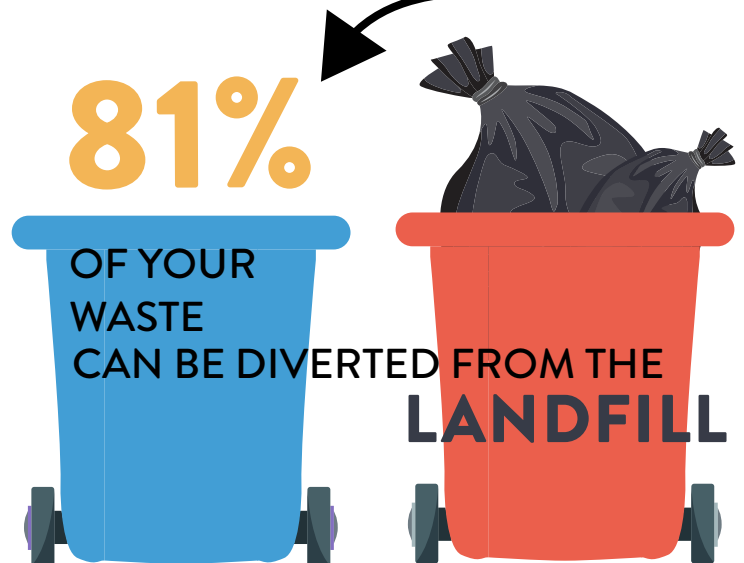
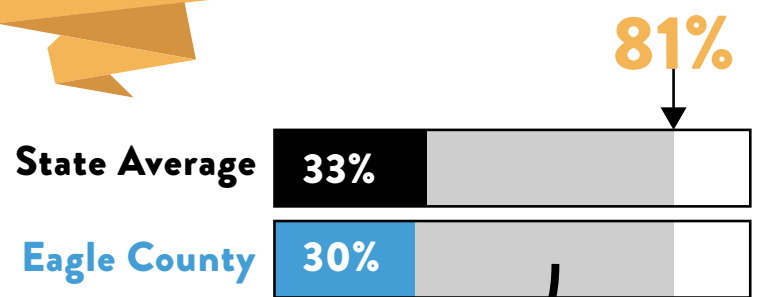
- Asptic Cartons *juice and milk cartons*
- Starbucks/hot coffee cups

ALWAYS TRASH

- Broken Stemware or Ceramics
- Small Plastics *utensils, cold/hot drink lids, dressing cups*
- Styrofoam

Don't guess! Check the Waste Wizard App

CURRENT DIVERSION RATES



ClimateActionCollaborative.org
#BeBetterTogether

Download this Guide at:
walkingmountains.org/recycleguide

CLIMATE
ACTION
COLLABORATIVE

walking mountains®
sustainability