

**DESIGNWORKSHOP**

# GYPSUM PARKWAY CORRIDOR ENHANCEMENT

Gypsum, Colorado

Schematic Design  
January 2015

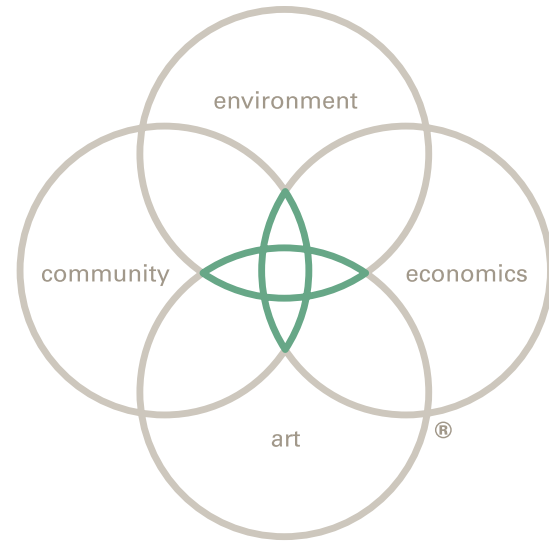


GYPSUM, CO, USA

# 1

## PROJECT BACKGROUND AND EXISTING CONDITIONS

## Project Background



DW Legacy Design® categories of sustainability.

## Project History

While studying the Gypsum interchange along I-70, it became apparent to the Town of Gypsum that the new aesthetic and community image should be carried from the interchange through the Town along Highway 6.

## DW Legacy Design®

Design Workshop's Legacy Design process emphasizes a deliberate approach to sustainable design solutions that is comprehensive of four Legacy categories: Environment, Community, Art, and Economics.

## DW Legacy Design Method

The DW Legacy Design method builds a narrative foundation for a project and then sees the various components of that narrative (i.e. dilemma, thesis, narrative principles and goals) take shape in plans.

## Client Vision

The Town of Gypsum seeks unifying character, safe pedestrian connections and clear wayfinding along the Highway 6 corridor, its main civic and public "face" to welcome residents and visitors to the community.

## Project Thesis

A unified ornamental native landscape and corresponding hardscape material improvements that celebrate Gypsum's rural and riparian character will roll out the community "red carpet", welcome travelers to the Town, create a framework for possible redevelopment, and promote a recognizable town core.

## Critical Success Factors

### Landscape

Provide a coherent landscape design along Highway 6 that corresponds with improvements at I-70.

- Continue the planting scheme from the new I-70 interchange through the corridor - large masses of native planting with focused ornamental character.
- Strengthen the riparian zone along the Eagle River and Gypsum Creek with additional riparian planting.
- Provide at least a 6-foot landscape buffer between the roadway and pedestrian path.

### Wayfinding

Update and consolidate community and traffic related signage to meaningful locations.

- Rebrand Highway 6 through Gypsum as the "Gypsum Parkway."
- Provide an electronic variable message sign for community sponsored events.
- Remove all extraneous construction and amenity signage which is no longer applicable.

### Pedestrian Routes

Provide safe and meaningful pedestrian routes and crossings along Highway 6.

- Clearly define vehicular and pedestrian zones.
- Extend a multiuse path throughout the corridor that is 100% ADA accessible.
- Limit attached sidewalk conditions to a maximum of 300 feet. Separate the sidewalk and roadway whenever possible.
- Provide a signalized or lighted crosswalk between east and west bus stop near American Gypsum.
- Provide a new pedestrian bridge across Gypsum Creek.

### Community Character

Enhance and unify the overall aesthetic character of the community through landscape and site features.

- Provide a Visitor Center near the I-70 Interchange with future transit flexibility.
- Celebrate the Eagle River by enhancing the bridge crossing (lighting, signage, color and materials).
- Create an enhanced riparian open space corridor as a park and recreation community amenity.
- Physically implement the "Gypsum Parkway" through median plantings and focused improvements at key locations (intersections, crosswalks, bridges, etc.).



I-70 Interchange Schematic Plan



Proposed Interchange Enhancements

# Existing Conditions Photo Inventory



*Pedestrian Approach to Corridor*



*View to Eagle River Bridge*



*Landscape Character of Existing Roundabout Enhancements*



*Gypsum Creek*

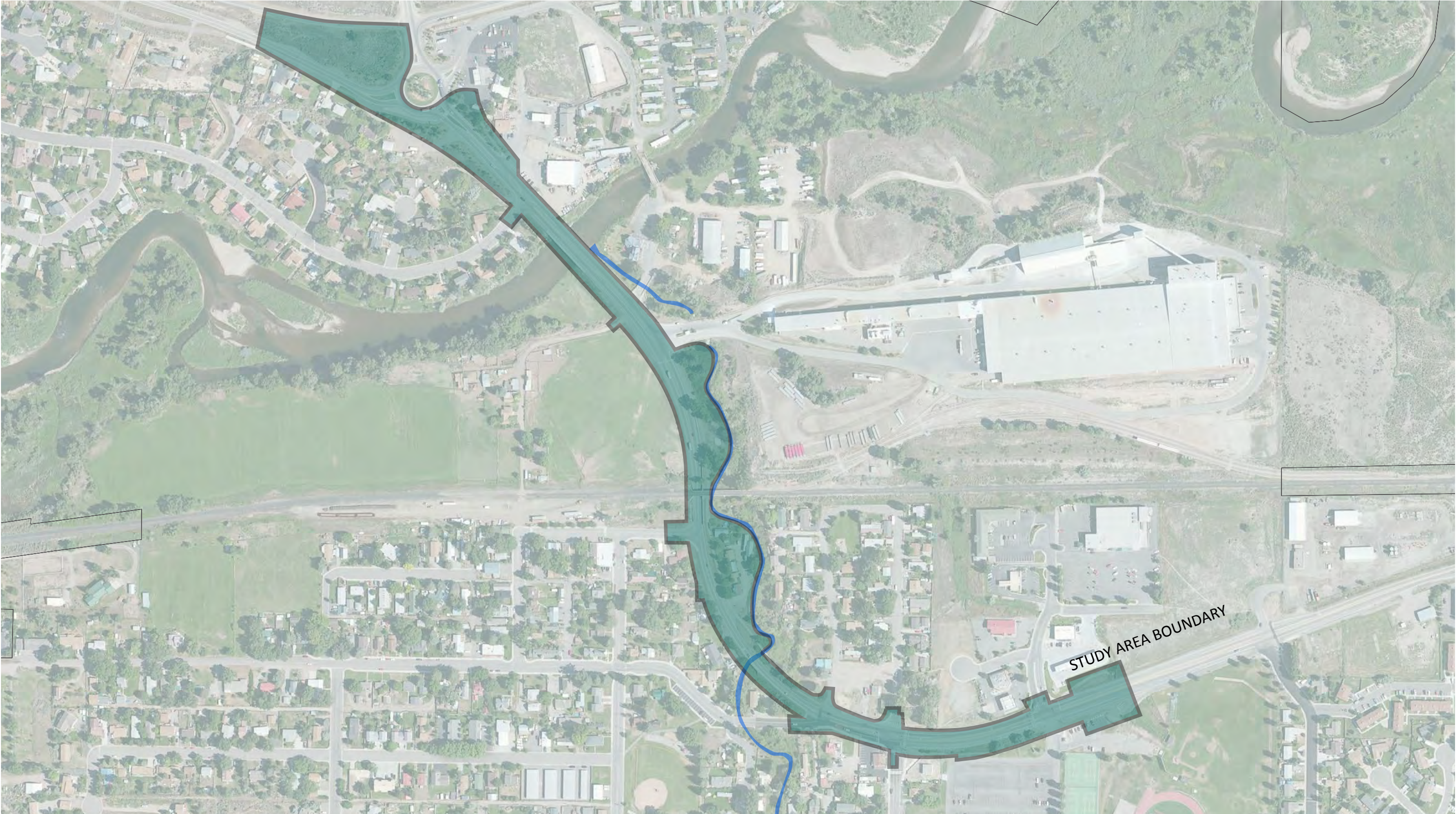


*Municipally-owned Open Space Parcel*

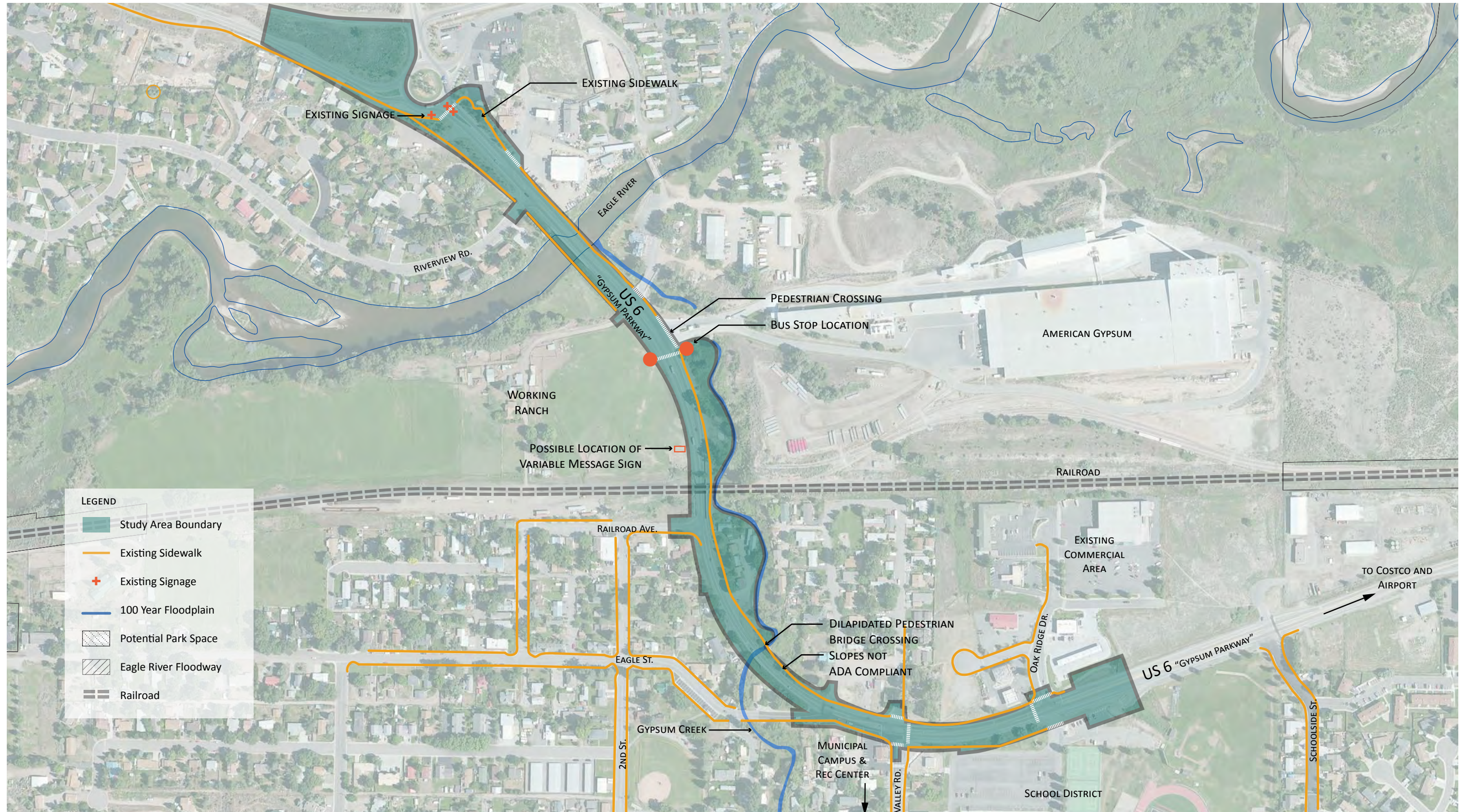


*ECO Transit Stop Location*

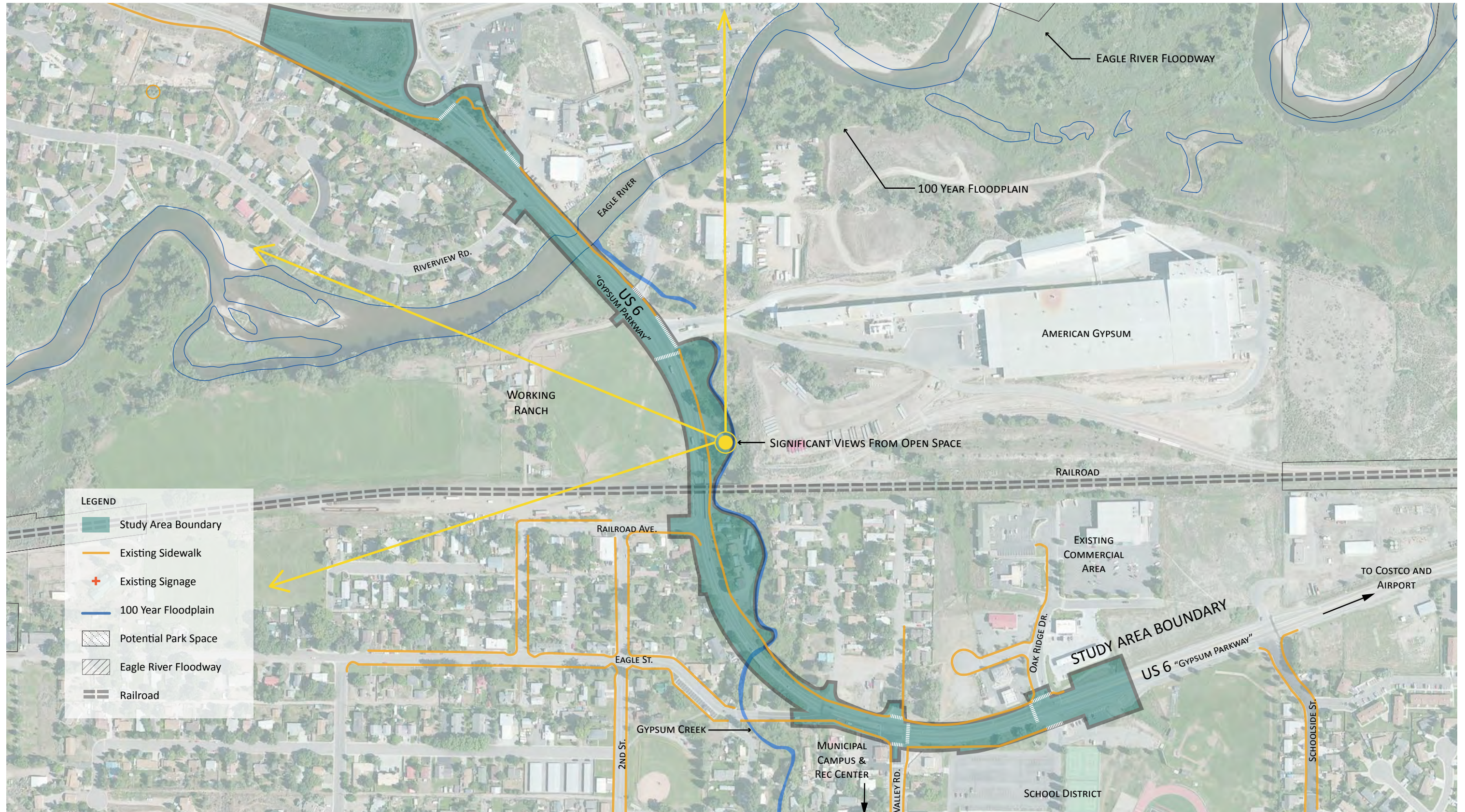
Study Area Boundary



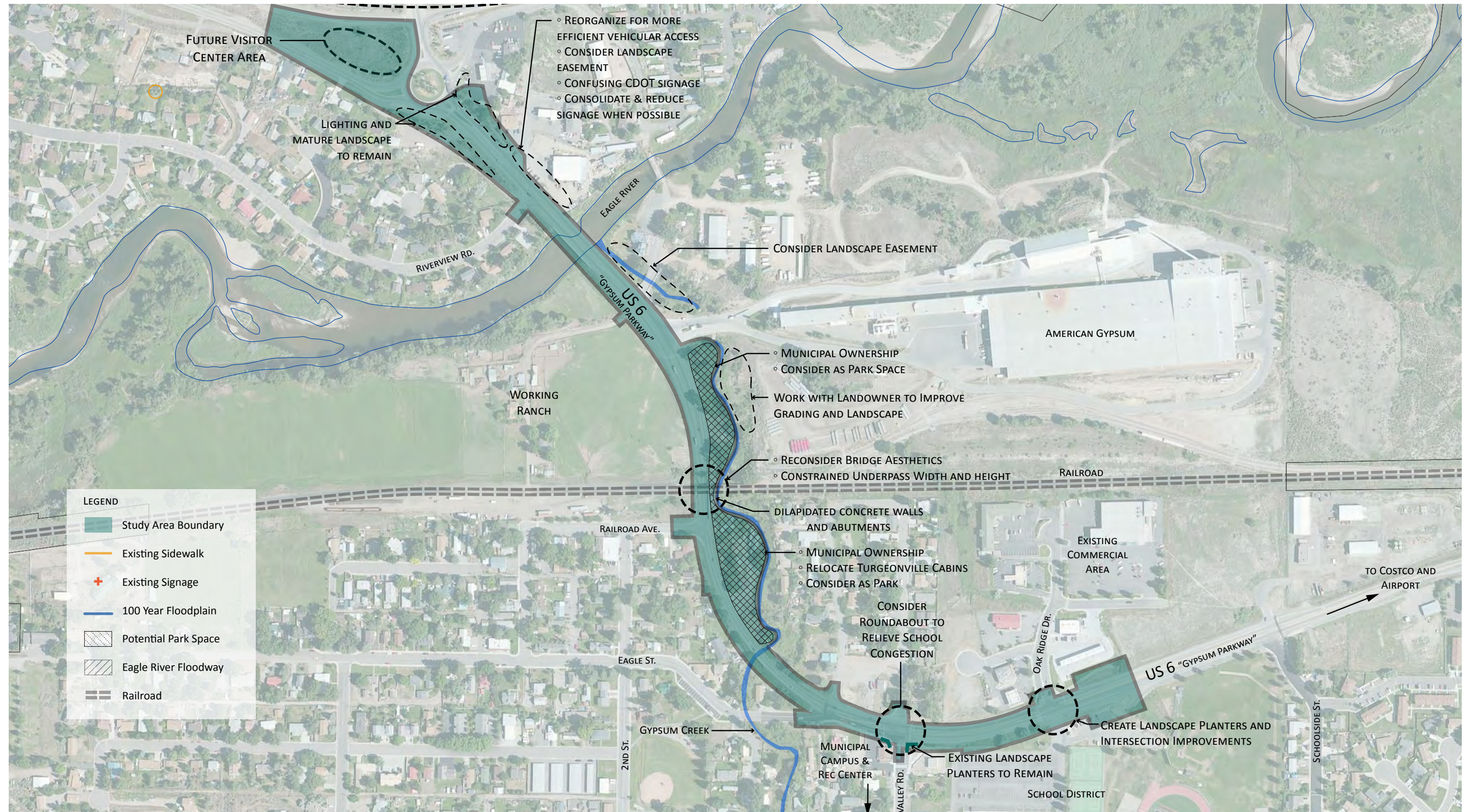
# Existing Pedestrian Connections & Signage



# Environmental Analysis



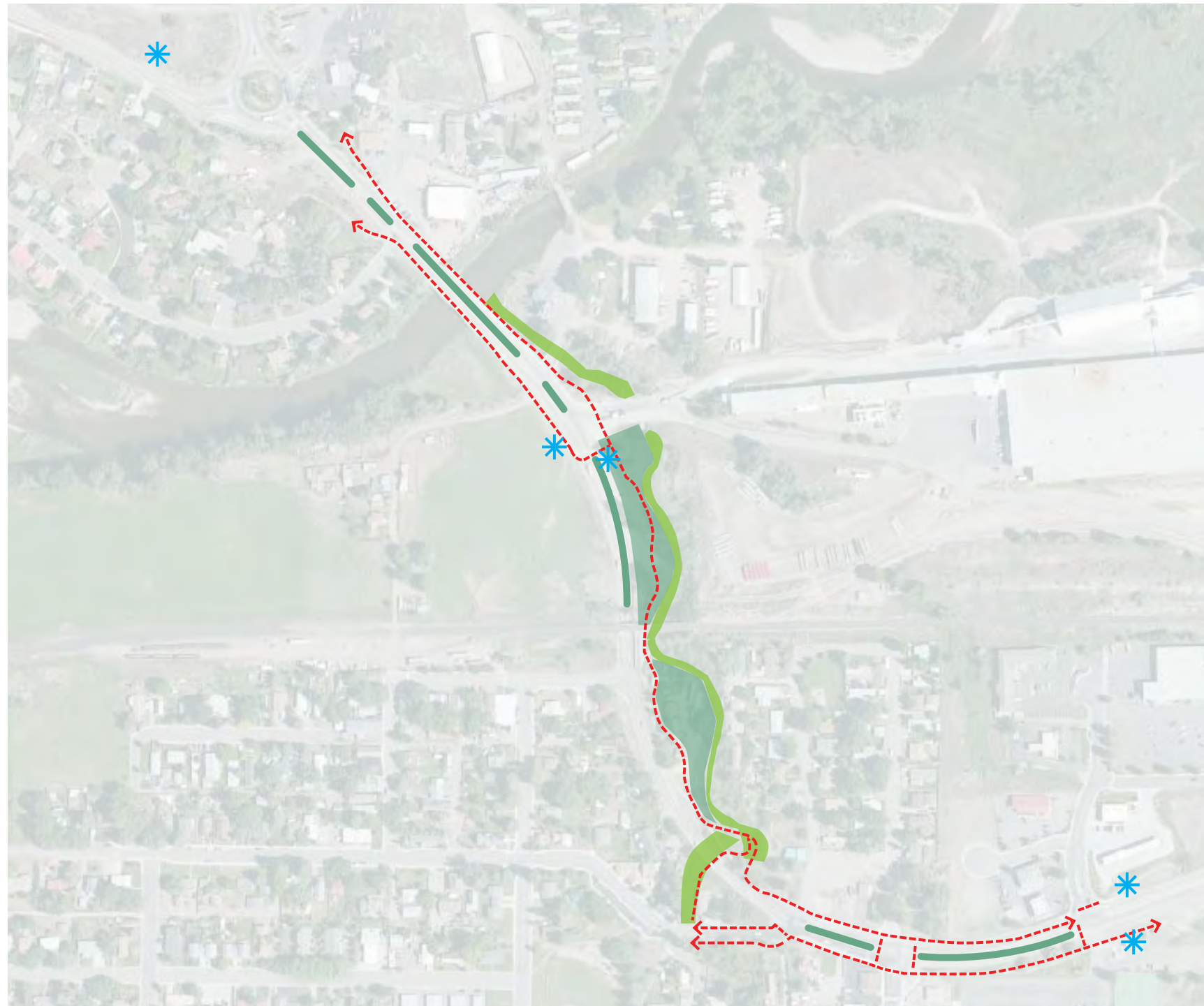
# Opportunities for Improvements





CORRIDOR MASTER PLAN

## Corridor Metrics



**6,280**

### Linear Feet of Paths Improved or Established

To connect the community and allow more accessibility for pedestrians, cyclist, joggers, and all forms of transit.



**2.51**

### Acres of Park & Open Space Established

To reinforce the arrival sequence, create a flexible space for town residents to recreate, host events, and engage with the natural riparian landscape.



**2,100**

### Linear Feet of Riparian Edge Restored

To restore native vegetation, increase biodiversity, and improve natural flood protection.

**5%**

### Maximum Slope of Multi-use Path

Keeping grades less than 5% meets ADA accessibility standards and opens the corridor to all residents.



**5**

### Transit Facilities Improved and created.

To enhance safety and use of transit to encourage alternative modes of travel.

**84%**

### Paths Separated from Roadway

Landscape buffers encourage a sense of protection along pedestrian paths from the roadway.



**1,930**

### Linear Feet of Raised or Landscaped Medians

To give US HWY 6 definition and character, 1,457' of raised medians and 472' of planted medians are proposed.

# Overall Landscape Concept



New Visitor Center and landscape welcome travelers to Gypsum

Trees and planting spatially frame corridor

Increase river legibility through bridge pavement change

Landscape announces bridge and river crossing

Enhanced transit facilities

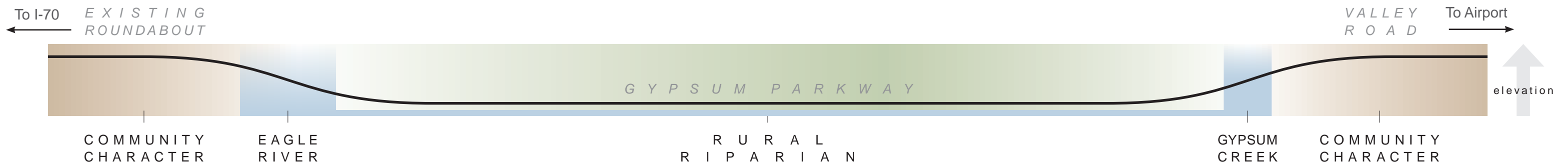
Enhanced riparian and rural character

Install variable message sign as welcome feature for the community

Create Gypsum Creek Park

Multi-use path enhancement increases accessibility and connectivity

Trees and planting increase Valley Road intersection hierarchy within the corridor



Overall Corridor Master Plan





NOTE: Design and implementation of future Visitor/Transit Center to be coordinated with appropriate agencies including CDOT, FHWA, ECO Transit, and Town of Gypsum.

**DESIGNWORKSHOP**  
 Landscape Architecture • Land Planning  
 Urban Design • Tourism Planning  
 Asheville • Aspen • Austin • Denver • Lake Tahoe

120 East Main Street  
 Aspen, Colorado 81611  
 (970) 925-8354  
 Facsimile (970) 920-1387

WWW.DESIGNWORKSHOP.COM

**GYPSUM PARKWAY  
 CORRIDOR IMPROVEMENTS  
 GYPSUM, COLORADO**

- Ornamental Grass Type 3
- Ornamental Grass Type 1
- Native Re-vegetation
- Proposed Evergreen Trees
- Oversized Vehicular Parking (Potential Future ECO Transit Area)
- Proposed Deciduous Tree
- Improved Crosswalk with Change in Pavement

ISSUE DATE: October 25, 2014

REVISIONS		
1		
2		
3		
4		
5		
6		
7		

DRAWN: MS/DC REVIEWED: KJ

**SCHEMATIC  
 DESIGN**

PROJECT NUMBER: 5057

SHEET NUMBER  
**L-01**





**DESIGNWORKSHOP**  
 Landscape Architecture • Land Planning  
 Urban Design • Tourism Planning  
 Asheville • Aspen • Austin • Denver • Lake Tahoe

120 East Main Street  
 Aspen, Colorado 81611  
 (970) 925-8354  
 Facsimile (970) 920-1387  
 WWW.DESIGNWORKSHOP.COM

**GYPSUM PARKWAY  
 CORRIDOR IMPROVEMENTS  
 GYPSUM, COLORADO**

- Improved Crosswalk with Change in Pavement
- Enhance Existing Landscape and Streetscape
- Light (Typical)
- Raised Landscape Median
- Ornamental Tree
- Deciduous Tree
- Ornamental Grass Type 1
- Low Groundcover
- Commercial Area Entrance
- Improved Crosswalk with Change in Pavement

ISSUE DATE: October 25, 2014

REVISIONS	DATE	BY	APP'D
1			
2			
3			
4			
5			
6			
7			

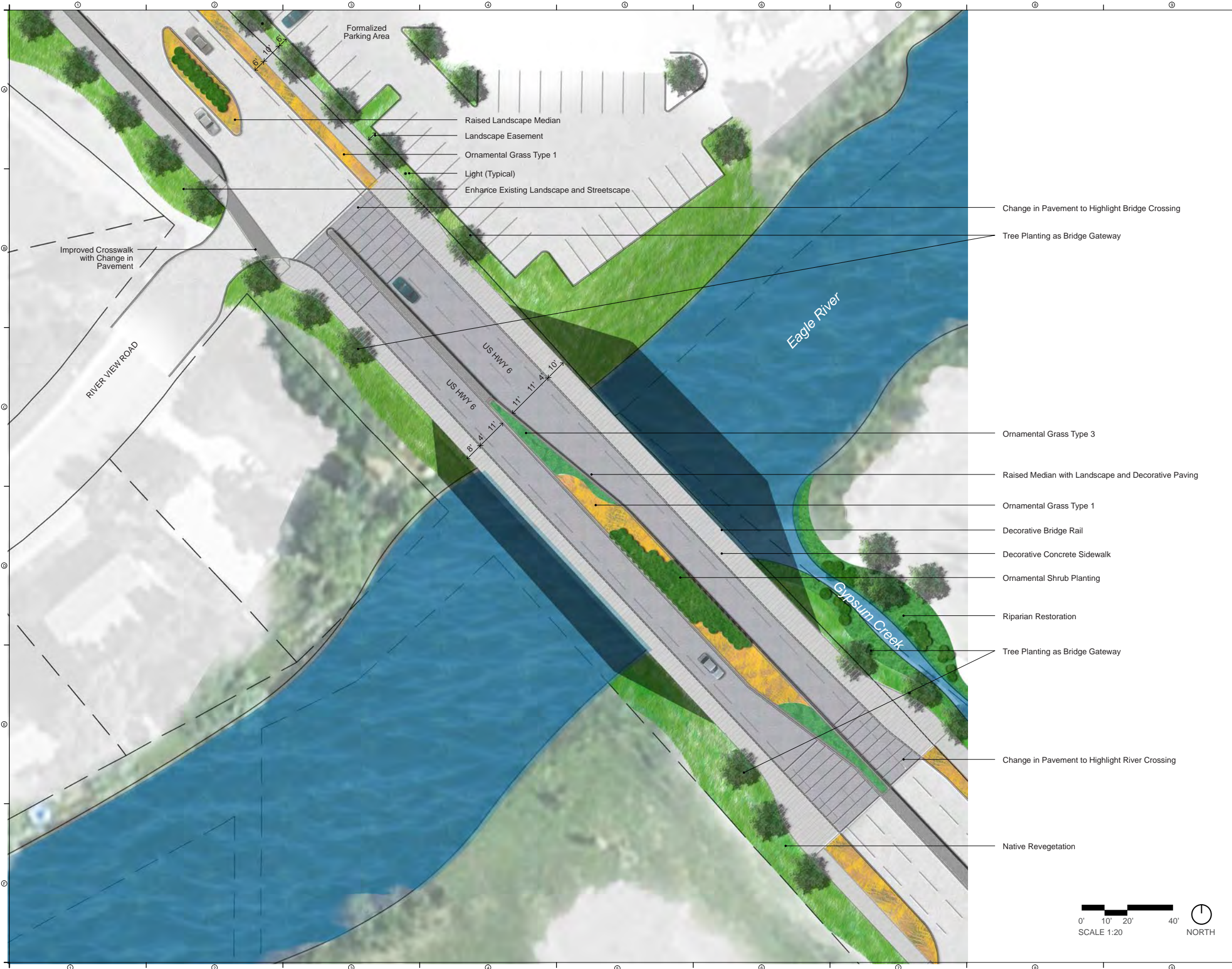
DRAWN: MS/DC REVIEWED: KJ

**SCHEMATIC  
 DESIGN**

PROJECT NUMBER: 5057

SHEET NUMBER  
**L-02**





**DESIGNWORKSHOP**  
 Landscape Architecture • Land Planning  
 Urban Design • Tourism Planning  
 Asheville • Aspen • Austin • Denver • Lake Tahoe

120 East Main Street  
 Aspen, Colorado 81611  
 (970) 925-8354  
 Facsimile (970) 920-1387  
 WWW.DESIGNWORKSHOP.COM

**GYPSUM PARKWAY  
 CORRIDOR IMPROVEMENTS  
 GYPSUM, COLORADO**

ISSUE DATE: October 25, 2014

REVISIONS		
1		
2		
3		
4		
5		
6		
7		

DRAWN: MS/DC REVIEWED: KJ

**SCHEMATIC  
 DESIGN**

PROJECT NUMBER: 5057

SHEET NUMBER  
**L-03**

© COPYRIGHT DESIGNWORKSHOP, INC.



**DESIGNWORKSHOP**  
 Landscape Architecture • Land Planning  
 Urban Design • Tourism Planning  
 Asheville • Aspen • Austin • Denver • Lake Tahoe

120 East Main Street  
 Aspen, Colorado 81611  
 (970) 925-8354  
 Facsimile (970) 920-1387  
 WWW.DESIGNWORKSHOP.COM

**GYPSUM PARKWAY  
 CORRIDOR IMPROVEMENTS  
 GYPSUM, COLORADO**

ISSUE DATE: October 25, 2014

REVISIONS	DATE	BY	REASON
1			
2			
3			
4			
5			
6			
7			

DRAWN: MS/DC REVIEWED: KJ

**SCHEMATIC  
 DESIGN**

PROJECT NUMBER: 5057

SHEET NUMBER  
**L-04**

© COPYRIGHT DESIGNWORKSHOP, INC.

- Raised Median with Landscape and Decorative Pavement
- Riparian Restoration
- Improved Crosswalk with Change in Pavement
- Multi-use Path
- Raised Median with Decorative Pavement
- Light (Typical)
- Improved Crosswalk with Change in Pavement
- Native Re-vegetation
- Improved Crosswalk with Change in Pavement (Includes Flashing Pedestrian Signals in Pavement)
- Bike Racks
- Improved Bus Pull-off with Change in Pavement
- Transit Shelter
- Improved Transit Facilities (in coordination with ECO Transit)





**DESIGNWORKSHOP**

Landscape Architecture • Land Planning  
Urban Design • Tourism Planning  
Asheville • Aspen • Austin • Denver • Lake Tahoe

120 East Main Street  
Aspen, Colorado 81611  
(970) 925-8354  
Facsimile (970) 920-1387

WWW.DESIGNWORKSHOP.COM

**GYPSUM PARKWAY  
CORRIDOR IMPROVEMENTS  
GYPSUM, COLORADO**

ISSUE DATE: October 25, 2014

REVISIONS

1		
2		
3		
4		
5		
6		
7		

DRAWN: MS/DC REVIEWED: KJ

**SCHEMATIC  
DESIGN**

PROJECT NUMBER: 5057

SHEET NUMBER

L-05

© COPYRIGHT DESIGNWORKSHOP, INC.



- Ornamental Grass Type 3
- Ornamental Grass Type 2
- Ornamental Grass Type 1
- Ornamental Shrub Planting
- Riparian Restoration
- Raised Median with Landscape
- Multi-use Path
- Deciduous Tree

- Shortened Barrier Wall
- Possible Future Four-Lane Alternative Under Railroad Bridge





**DESIGNWORKSHOP**  
 Landscape Architecture • Land Planning  
 Urban Design • Tourism Planning  
 Asheville • Aspen • Austin • Denver • Lake Tahoe

120 East Main Street  
 Aspen, Colorado 81611  
 (970) 925-8354  
 Facsimile (970) 920-1387  
 WWW.DESIGNWORKSHOP.COM

**GYPSUM PARKWAY  
 CORRIDOR IMPROVEMENTS  
 GYPSUM, COLORADO**

ISSUE DATE: October 25, 2014

REVISIONS	DATE	DESCRIPTION
1		
2		
3		
4		
5		
6		
7		

DRAWN: MS/DC REVIEWED: KJ

**SCHEMATIC  
 DESIGN**

PROJECT NUMBER: 5057

SHEET NUMBER  
**L-06**

© COPYRIGHT DESIGNWORKSHOP, INC.

- Possible Future Four-Lane Alternative Under Railroad Bridge
- Shortened Barrier Wall
- Reconfigured Gypsum Creek
- Existing Tree to Remain
- Riparian Island
- Native Revegetation
- Ornamental Shrub Planting
- Ornamental Grass Type 3
- Ornamental Grass Type 1
- Multi-use Path
- Light (Typical)





- Riparian Restoration
- New Pedestrian Bridge
- Light (Typical)
- Realigned Multi-use Path to Meet ADA Standards (5% Maximum Grade)
- Pedestrian Underpass Connection

**DESIGNWORKSHOP**  
 Landscape Architecture • Land Planning  
 Urban Design • Tourism Planning  
 Asheville • Aspen • Austin • Denver • Lake Tahoe

120 East Main Street  
 Aspen, Colorado 81611  
 (970) 925-8354  
 Facsimile (970) 920-1387  
 WWW.DESIGNWORKSHOP.COM

**GYPSUM PARKWAY  
 CORRIDOR IMPROVEMENTS  
 GYPSUM, COLORADO**

ISSUE DATE: October 25, 2014

REVISIONS		
1		
2		
3		
4		
5		
6		
7		

DRAWN: MS/DC REVIEWED: KJ

**SCHEMATIC  
 DESIGN**

PROJECT NUMBER: 5057

SHEET NUMBER  
**L-07**

© COPYRIGHT DESIGNWORKSHOP, INC.





**DESIGNWORKSHOP**  
 Landscape Architecture • Land Planning  
 Urban Design • Tourism Planning  
 Asheville • Aspen • Austin • Denver • Lake Tahoe

120 East Main Street  
 Aspen, Colorado 81611  
 (970) 925-8354  
 Facsimile (970) 920-1387  
 WWW.DESIGNWORKSHOP.COM

**GYPSUM PARKWAY  
 CORRIDOR IMPROVEMENTS  
 GYPSUM, COLORADO**

- Deciduous Tree
- Native Revegetation
- Improved Crosswalk with Change in Pavement
- Raised Stamped Concrete Planters with Ornamental Landscape
- Raised Median with Landscape and Decorative Pavement
- Reconfigured Intersection with Double Turn and Merge Lane
- Existing Raised Stamped Concrete Planter

ISSUE DATE: October 25, 2014

REVISIONS	DATE	BY	REASON
1			
2			
3			
4			
5			
6			
7			

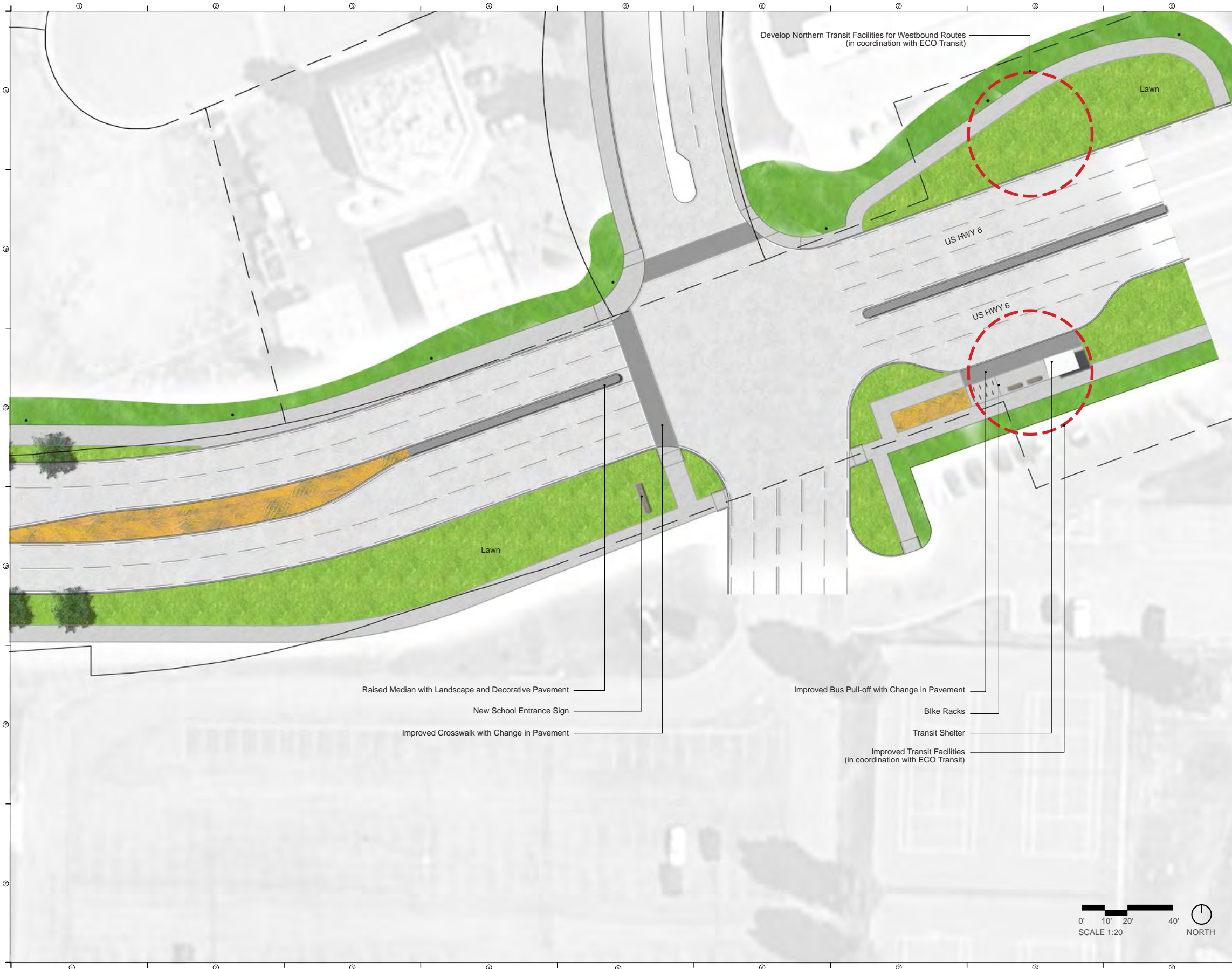
DRAWN: MS/DC    REVIEWED: KJ

**SCHEMATIC  
 DESIGN**

PROJECT NUMBER: 5057

SHEET NUMBER  
**L-08**





**DESIGNWORKSHOP**  
 Landscape Architecture • Land Planning  
 Urban Design • Tourism Planning  
 Asheville • Aspen • Austin • Denver • Lake Tahoe

120 East Main Street  
 Aspen, Colorado 81611  
 (970) 925-8354  
 Facsimile (970) 920-1387  
 WWW.DESIGNWORKSHOP.COM

**GYPSUM PARKWAY  
 CORRIDOR IMPROVEMENTS  
 GYPSUM, COLORADO**

ISSUE DATE: October 25, 2014

REVISIONS	
1	
2	
3	
4	
5	
6	
7	

DRAWN: MS/DC REVIEWED: KJ

**SCHEMATIC  
 DESIGN**

PROJECT NUMBER: 5057

SHEET NUMBER  
 L-09

© COPYRIGHT DESIGNWORKSHOP, INC.

